

MATERIALS

(1) 3880-02 COATING



(2) 3880-10 FLINT-LASTIC



(3) 2648-00 THERMO FIBER



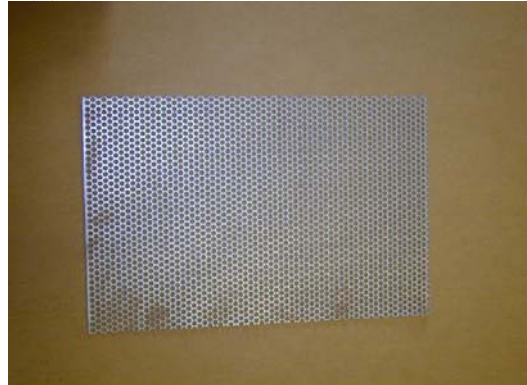
(4) 2640-00 KAOWOOL BLANKET



(5) 2400-00 SS HEX MESH WIRE



(6) 4720-09 PERFORATED METAL



(7) 2006-00 SPEED CLIP FASTENER



(8) 1662-0* DOOR GASKET + RIVETS



RELINE STEPS

(1) APPLY 3880-02 COATING



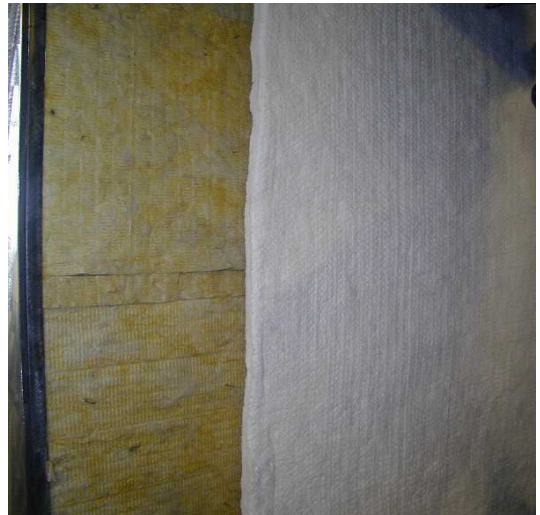
(2) INSTALL 3880-10 FLINT-LASTIC



(3) INSTALL 2648-00 THERMO FIBER



(4) INSTALL 2640-00 KAOWOOL BLANKET



(5) INSTALL 2400-00 SS HEX MESH WIRE



(6) INSTALL 4720-09 PERFORATED METAL
And 2006-00 SPEED CLIPS (Fastener)

