

STEPS TO REPLACE FURNACE SEALS.

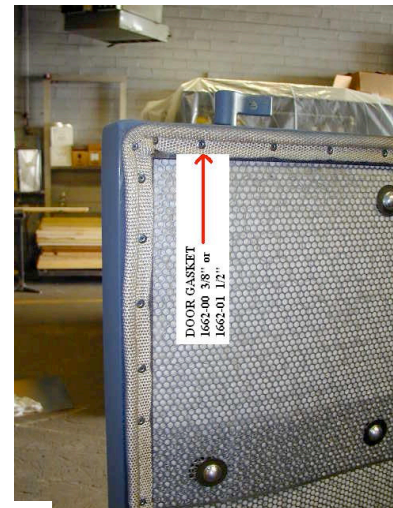
Part # 1662-00 or 1662-01

1: REMOVE THE OLD **DOOR GASKET** AND RIVETS

Note: Locate the area where the door gaskets joints together, this will be the starting point to install the new Gasket.

Using a drill gun with a # 29 drill bit remove all old pop rivets. Make sure the surface is clean.

2: Start installing the new gasket where the old gasket joint was. You should be able to use the same pre-drilled holes. If you need to make new holes they should be at every other 4". On the corners the pop rivets will be closer together.



DOOR BATTEN

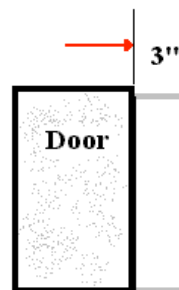
Part # 7220-0?

1: REMOVE THE OLD **DOOR BATTEN**

Note: Pull the old Speed clips Fasteners. Do not break the weld pins (Studs) With the door Open, Start from the top; leave the DOOR BATTEN about 1" up from the topside of the door and 3" overlap from the Door.

(Note Make sure the door batten is long enough)

2: Install the Speed Clip Fasteners to secure the **DOOR BATTEN** Close the Door, mark a line from the inside on the top and bottom and trim the excess of the door batten.



DOOR FRAME BATTEN KIT

Part # 7220-14

1: REMOVE THE OLD **DOOR FRAME BATTEN KIT**

Note: Pull the old Speed clips Fasteners. Do not break the weld pins (Studs)

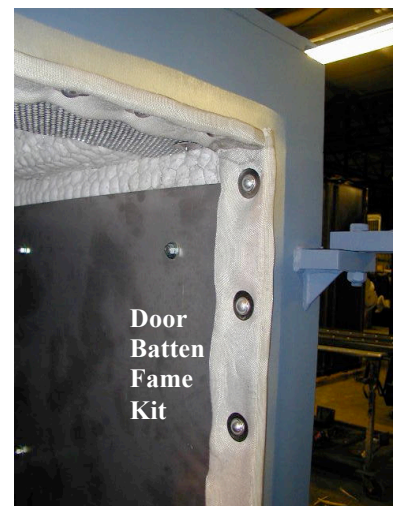
With the door Open, Install the **Side Pieces** First. Start at the top.

Note: Leave a 1/4" sticking out from the frame

Install Speed clips as necessary and Trim the Excess at the bottom.

2: Install the Top pieces. Close the Door so you can see how much you need to trim on the top Piece

Note: The Door Batten Will Fit Snug in between the 2 Top pieces



MATERIALS

(1) 3880-02 COATING



(2) 3880-10 FLINT-LASTIC



(3) 2648-00 THERMO FIBER



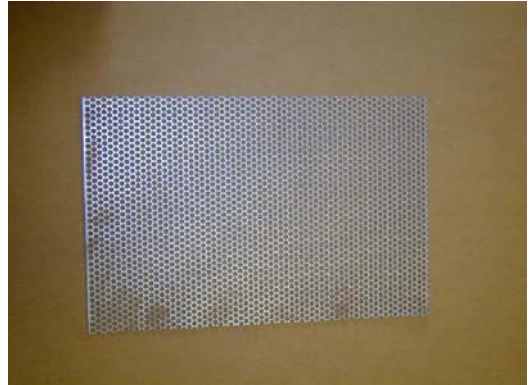
(4) 2640-00 KAOWOOL BLANKET



(5) 2400-00 SS HEX MESH WIRE



(6) 4720-09 PERFORATED METAL



(7) 2006-00 SPEED CLIP FASTENER



(8) 1662-0* DOOR GASKET + RIVETS



RELINE STEPS

(1) APPLY 3880-02 COATING



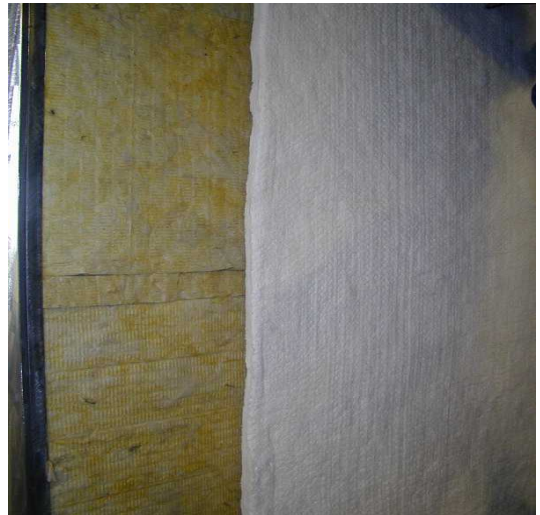
(2) INSTALL 3880-10 FLINT-LASTIC



(3) INSTALL 2648-00 THERMO FIBER



(4) INSTALL 2640-00 KAOWOOL BLANKET

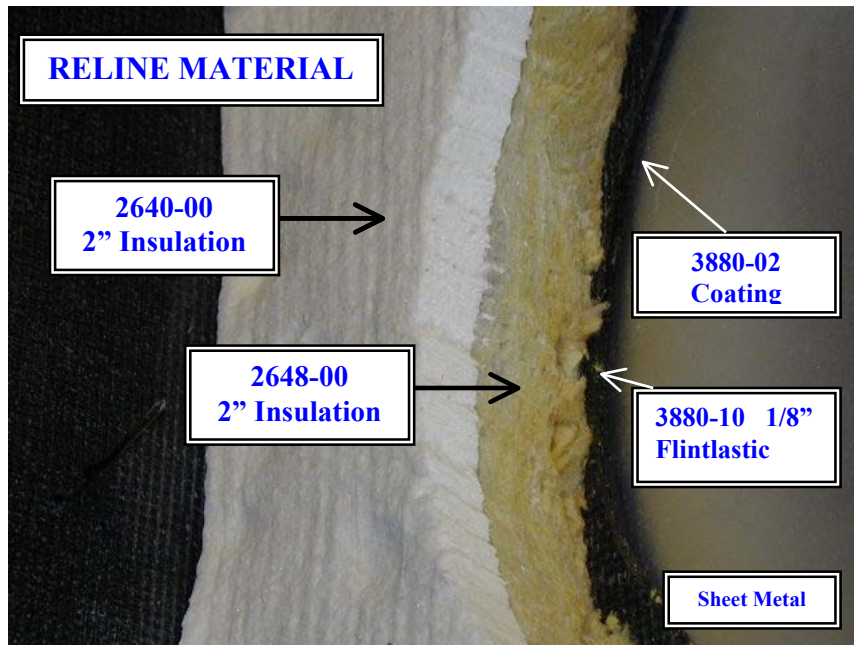


(5) INSTALL 2400-00 SS HEX MESH WIRE



(6) INSTALL 4720-09 PERFORATED METAL
And 2006-00 SPEED CLIPS (Fastener)





INSULATION MATERIAL (ONLY) CROSS SECTION VIEW

07/18/2005

Part No.	Description	U/M
2009-00	WELD PINS 3 1/2"	E/A
3880-02	OVEN COATING STALASTIC 5 GL.	E/A
3880-10	FLINTLASTIC SHEET 100 SF 39 1/2" W	ROLL
2648-00	THERMOFIBER 2"(8 SF.SHEET) 6 / PACK (24" x 48")	PACK
2640-00	KAOWOOL 1" (100 SF. ROLL) (48" W x 300"L)	ROLL
2400-00	HEX MESH WIRE 24" WIDE	SF
4720-09	PERFORATED METAL 4' X 8'	SHEET
2006-00	SPEED CLIPS	E/A

